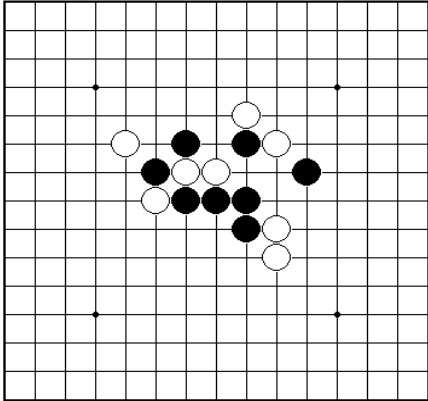


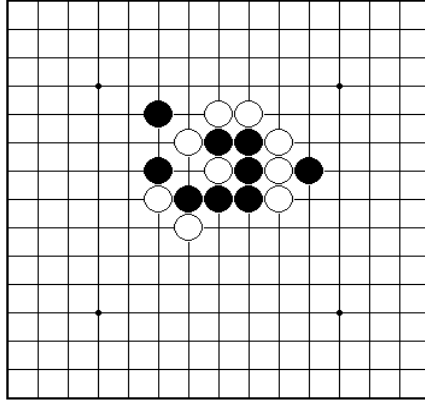
# 連珠11級ドリル(例題)

1. 黒1手で四三を作ってください。

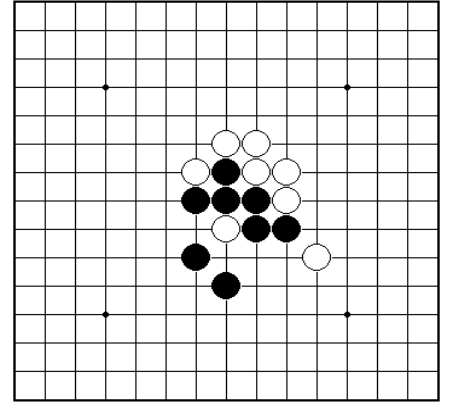
①



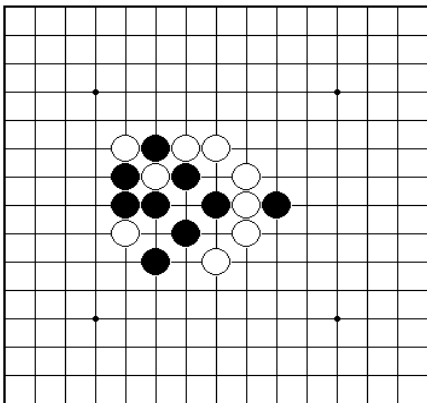
②



③



④



## 級位認定の目安

(1) 20問中16問以上正解で11級

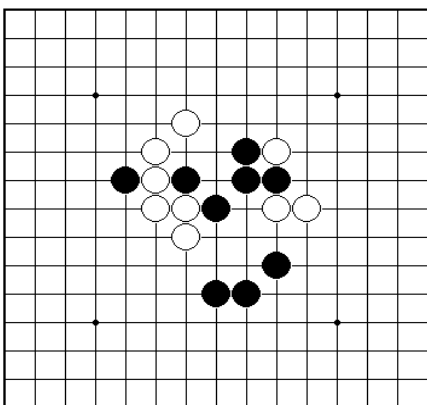
この問題は級位認定の目安となるものです。

実際の級位認定は級位認定権を持っている人が行います。

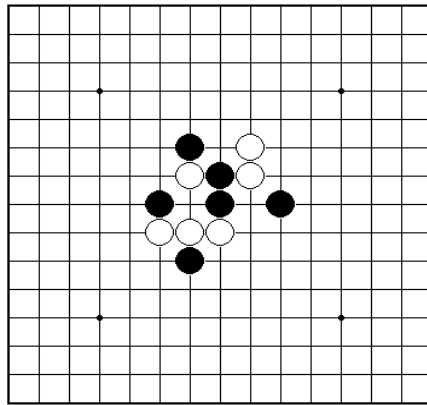
作成: 公益社団法人日本連珠社 普及推進委員会

公益社団法人日本連珠社HP: <http://www.renjusha.net/>

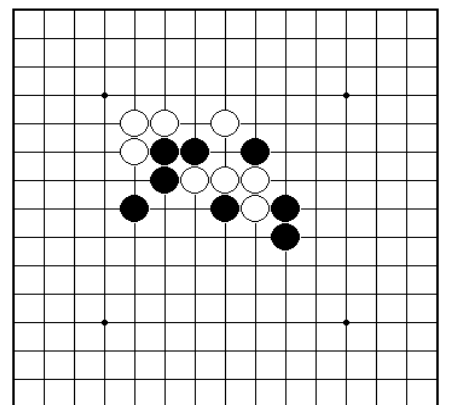
⑤



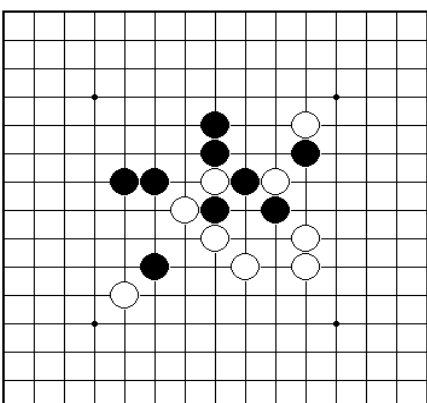
⑥



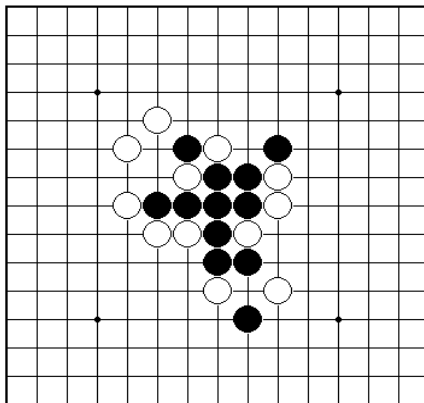
⑦



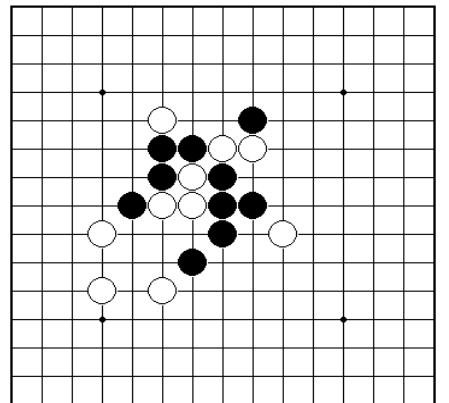
⑧



⑨



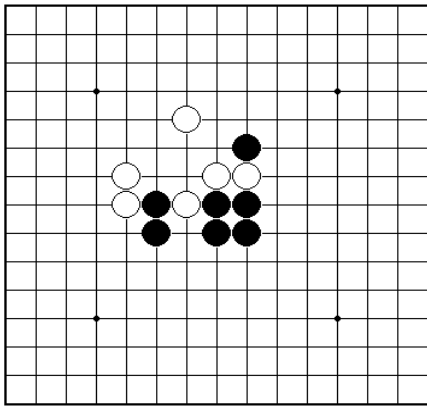
⑩



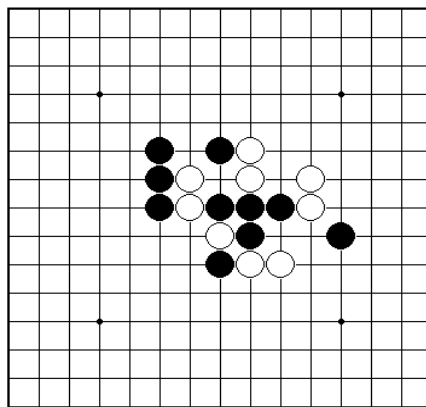
裏面に問題あり

2. 白1手で四三を作ってください。

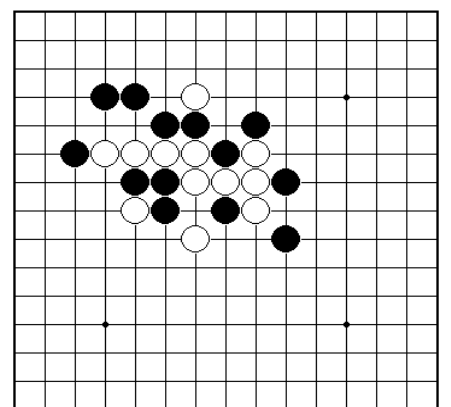
①



②

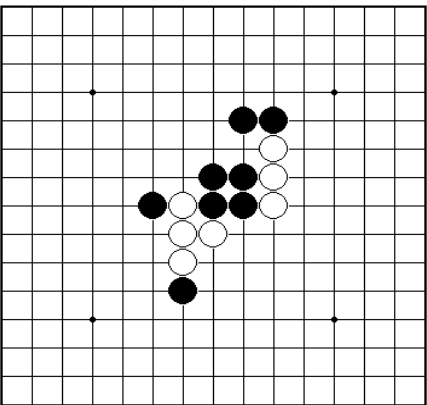


③



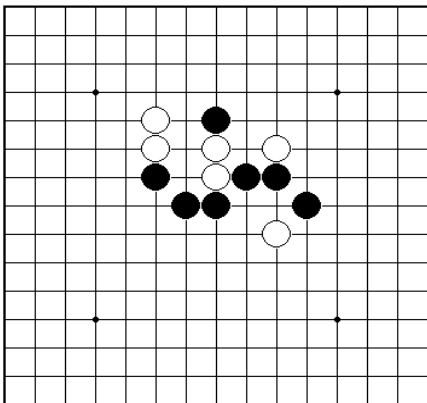
裏面

④

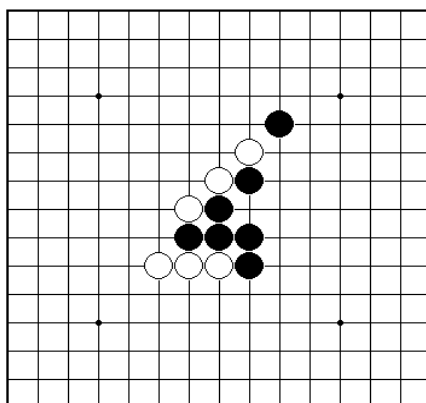


3. 白1手で四々を作ってください。

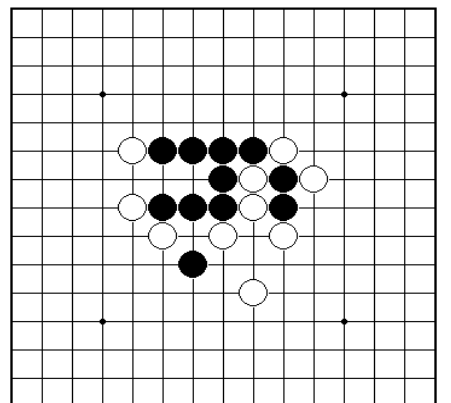
①



②

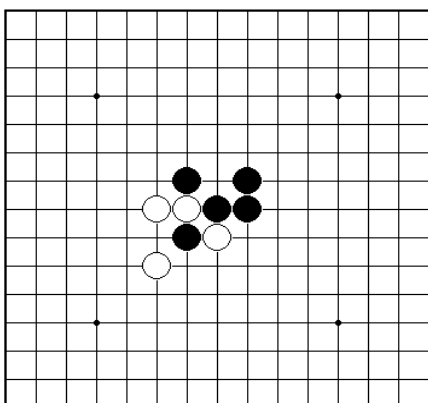


③

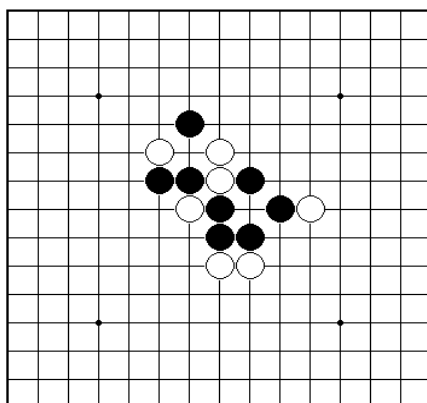


4. 白1手で三々を作ってください。

①



②



③

